



District Councillors' Report to Playford Parish Council

For March 2023

Carlford and Fynn Valley Ward.

Rushmere Village, Otley, Witnesham and Swiland, Westerfield, Clopton, Charsfield.

Great Bealings, Little Bealings, Playford, Bredfield, Grundisburgh & Culpho, Hasketon, Tuddenham, Boulge, Burgh, Debach, Dallinghoo.

From District Councillor

Cllr Colin Hedgley

Bottle Bank

I have applied for £1835 from my Enabling Communities Budget for the repair of the Bottle Bank and that money should be in your account soon.

C324 and Flooding

The road between Holly Lane and Butts Road was closed on the 21st and 22nd of February whilst exploratory checks were made on the road drainage system near Clematis Cottage. Residents will know that anything other than a short shower and the road floods up to 6 inches for about 30 yards. We await results.

SIDs

Tracy Herrington has volunteered to take over the SID responsibility from her late father Ted. A big thank you to Tracy.

Council Tax

As most of you are aware the government instructed local councils not to raise Council Tax by more than 5%. ESC has set ours at 2.8% for 2023/24. I have no responsibility for the County Council or the Police and Crime Commissioner who I know is struggling with ever increasing demands and costs.

East Suffolk Council approves a budget of over £30million to fund essential services in 2023/24.

The spending plan, to help improve the lives of residents over the coming financial year, was agreed by councillors at a meeting of the full council on Wednesday 22 February. Additionally, in the five years up to and including 2026/27, a forecast £410m will go towards major projects as part of the council's overall General Fund Capital Programme, and an additional £83m on housing development and new build schemes, and maintenance of the



existing housing stock. Over £287m has been raised from external grants and contributions towards the cost of our General Fund capital project programme. This includes a £24.9m Towns Fund grant to regenerate Lowestoft, driving economic growth and acting as a catalyst for future investment, and rising to a potential £35.9m with the addition of matched funding, while UK Shared Prosperity and Rural England Prosperity Fund grants will support local business, people and skills throughout the district.

A General Fund Revenue Budget of £30.1m for 2023/24 includes £16.37million in Council Tax, which makes up just over 50% of the money we receive. However, the portion of Council Tax which East Suffolk receives (around 10% of the total bill) will only increase by 2.81%, or £4.95 for the entire year on the annual bill of a Band D property. The remaining 90% goes to Suffolk County Council, the Police & Crime Commissioner, and Town/Parish councils.

[May 2023 elections: Photographic voter ID easy read guides](#)

As part of its public awareness campaign, the Electoral Commission has published new [easy-read and plain text format resources about](#) (control and Click) the new voter identification requirements.

These resources set out the new requirements to provide photographic voter identification at this year's local elections and how voters can apply for a voter authority certificate if they do not have approved identification. If you use a Driving Licence for instance and it is quite old, so long as the photo is a reasonable likeness then it will be accepted.

[Ease the Squeeze on cost of living](#)

If you, or someone you know, is worried about the increasing cost of living the help is at hand. We understand the pressures faced by many people today and we are working closely with key partners to ensure support is available to help ease the squeeze for households in East Suffolk. To make it as easy as possible for you to access the services and support available, locally and nationally, we have gathered information about them in one place.

[Head to our Ease the Squeeze page now](#) (control and click)



**EASE THE
SQUEEZE**



Imported food products surrendered following vehicle spot check

Food inspectors from East Suffolk Council helped intercept a quantity of suspected illegally imported meat following a vehicle stop in Lowestoft. The discovery was made during a multi-agency spot check of vehicles, in Lowestoft, on Friday 3 February. East Suffolk Council's Food and Safety team investigated the contents of the vehicle following a request for assistance from Suffolk County Council Trading Standards colleagues. The van was found to contain mainly pork, eggs and other food, which the occupants of the vehicle claimed was for personal consumption. It was also found to contain weighing scales and a refrigerator.

Suffolk councils secure £2.2m to improve tenants' quality of life

Suffolk's district and borough councils have secured £2.2m of Government funding to improve the standard of private rented homes in the county – tackling poor housing conditions and improving tenants' wellbeing.

The successful joint bid, by Babergh, **East Suffolk**, Ipswich, Mid Suffolk and West Suffolk Councils, will see the funding awarded over two years by the Department of Housing, Levelling Up and Communities (DHLUC), from a share of its £14m Private Rented Sector (PRS) Pathfinder Programme.

The funding will be used to create and support additional roles, offering advice and support to tenants and landlords, and taking enforcement action against those who continue to let poor quality housing.

It will also enable the councils to continue working collaboratively, pooling resources to improve the standards of privately rented homes as part of the Suffolk PRS - Empower, Encourage, Enforce project.

Focusing on engagement, the project will give landlords, tenants and communities a better understanding of their rights and responsibilities. Eligible landlords and tenants will also be signposted to available grants to assist with the cost of improving properties.



And lastly:-

This is probably the last meeting I shall have with Playford PC before the Local Elections on 4th May. Thank you for your time and patience in what was, because of the pandemic, a very difficult few years in the middle of the four.

I shall be standing again, along with my colleague, Ben Coupe, (Tony Fryatt has retired).

Whoever you vote for, please vote on May the 4th. Local Councils are important to each and every one of us, their decisions affect you.



Just42
making a positive impact

www.just42.org.uk

We are a local charity with 10 years experience of mentoring young people with our Compass mentoring program

DO YOU HAVE A HEART FOR YOUNG PEOPLE

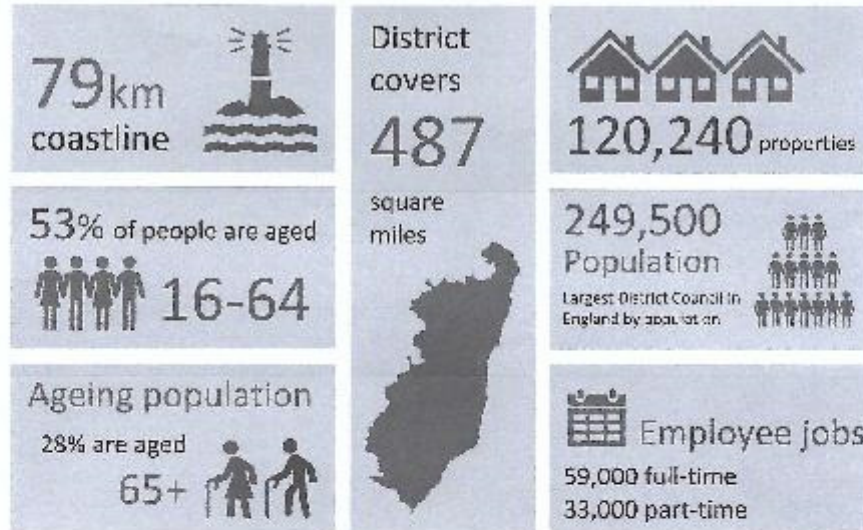
Do you have an hour or so each week for a period of time

Scan the QR code or contact us
E: info@just42.org.uk
T: 01394 380992



SCAN ME

About East Suffolk



Key statistics 2021/22

