

Fynn - Lark News

FEBRUARY 2024



THE STREET, LITTLE BEALINGS

The lack of a name beyond 'The Street' shows how central and important this road is to the village. Looking back in time, Home Farm and Grove Farm were both run from close to this village centre, with accesses to The Grove, the Church, the Angela Cobbold Hall, the Old Village Stores and the Admiral's Head pub, where both a blacksmith's and a haulage business were once run from its yard, all on to The Street. Bealings School is of course nearby along Sandy Lane, while Bealings Station was built for access from The Street, first transporting travellers and goods in 1859.

Technically the location of Bealings Station, now Mallard Business Centre, marks the end of The Street and the start of Station Road, which runs up to the crossroads with Martlesham, Playford and Hall Roads. At the other end Bealings Village Hall also faces on to what is technically The Street, as it runs as far as the junction with Lower Street in Great Bealings, even if some consider the road here as part of Lodge Road. You can check this out at: <https://www.findmystreet.co.uk/map>

**Magazine for the Parishes of Great & Little
Bealings, Playford and Culpho**

Today The Street is as busy as ever, perhaps more so with through traffic avoiding busier roads nearby. A 20mph speed limit was achieved by the Parish Council in 2017 and our Speed Indicator Device, reminding motorists of this limit, will be back in The Street as part of our rota as soon as SCC replaces the rusted pole it uses – expected by mid March.

Over Christmas 2022, the importance of the through route of The Street was brought home sharply to residents by Network Rail's extended closure of the level crossing. This in effect cut the village in two – even for pedestrians. The Parish Council is still pursuing transfer of the fine levied by SCC on the contractor for the unauthorised extended closure, given that it was Little Bealings residents who bore the brunt of the closure impact.

Looking forwards, 2024 is also going to see major disruption to journeys involving The Street, with one closure expected to last several months.

2024: CLOSURES OF THE STREET

NETWORK RAIL TRACK IMPROVEMENTS

Network Rail has contacted some residents advising of overnight closures (from 23.10 to 06.10) of the level crossing for track improvements most nights in February and also:

From 20.00 on Saturday 10 February to 07.00 on Monday 12 February

From 20.00 on Saturday 17 February to 07.00 on Monday 19 February

From 20.00 on Saturday 24 February to 07.00 on Monday 26 February

There will also be use of the adjacent compound, as before, to store equipment. All enquiries are to a 24 hour helpline: 03457 11 41 41

or via <https://www.networkrail.co.uk/communities/contact-us/>

ANGLIA WATER SEWERAGE SCHEME

The following information has been provided to the Parish Council by Anglia Water:

“As part of this first-time sewerage scheme, we're installing 745metres of gravity sewer and 490metres of new pumped sewer pipe and installing a new pumping station within Little Bealings. We will be starting this scheme in June 2024, and you can see our pipeline route below.

Our site team completed a number of surveys to determine whether there were bats within a tree that is located near to where our site compound is going to be located. These surveys were completed on Friday 06 January 2024 and concluded that no bats were in the tree and therefore can be removed. Our site team returned to site on Thursday 11 and Friday 12 January 2024 to remove the tree that the surveys were completed on. We thank you for your patience whilst the work was completed and also, we thank you for allowing our site team to use the facilities at the Angela Cobbold Hall whilst we completed this work.

We are due to complete archaeology digs from Monday 19 February; these digs are to make sure we don't disturb anything important when we install the new pipe. There shouldn't be much disruption, but you might be able to see and hear us working if you live nearby.



We will do our best to keep any disruption to a minimum when we complete the main works, but this is a major construction project so you will hear and see us working. The team will arrive quietly at our temporary site compound from 6am and work will start from 7am, we will aim to finish by 6pm each day. We don't currently plan to work weekends, but if this changes, we will let you know.

We'll be completing regular road sweeps to keep roads clear of mud. However, you are likely to notice an increase in mud on the roads between sweeps due to our construction traffic to and from our site compound.

We aim to start this work in June 2024, depending on our results from the archaeology, this date may change, and we will of course be in touch to confirm this once we know. With any engineering scheme there is always the potential for unforeseen delays, but we will update you of any significant changes. While we aim to reduce disruption to pedestrians and traffic as much as we can, our top priority will always be the safety of our staff and the public. This means that we will need to close certain roads as we work, we have the following scheduled traffic management. Please note, depending on when we start our works, these dates may change, and we will of course be in touch to confirm this.

The Parish Council is in regular contact with Anglia Water over the grant of planning permission for this scheme and the timetable and we include updates on our website here: <https://littlebealings.onesuffolk.net/main-sewerage-scheme-for-the-street/>
You can also contact Anglia Water directly about the scheme: 07716 083851 or email to firsttimesewerage@anglianwater.co.uk

Little Bealings Parish Council



Improving hearing. Changing lives.



Local, award-winning Audiologist returns with a new business, All About Hearing.

Karen's highly experienced audiology team are dedicated to providing you with exceptional, personalised hearing healthcare because we know that every individual is unique.

- Comprehensive hearing assessments
- **Fitting of the very latest hearing systems**
- Superlative aftercare service
- **Microsuction & irrigation ear wax removal**



Two Rivers Medical Centre:
30 Woodbridge Road East, Ipswich
Gilmour Piper:
10 Fonnereau Road, Ipswich



Karen Finch
RHAD FSHAA FRSA
Lead Audiologist

Better hearing starts here. Book your appointment today!
Call 01473 946444 or book online at: allabouthearing.co.uk

CONTENTS

NEWS & GENERAL INTEREST	<i>PAGE 5</i>
GREAT BEALINGS	<i>PAGE 15</i>
LITTLE BEALINGS	<i>PAGE 23</i>
PLAYFORD	<i>PAGE 33</i>
CULPHO	<i>PAGE 39</i>

NEWS & GENERAL INTEREST

MAGAZINE FINANCES

Funds are finely balanced. We're OK, but with ever more material reaching us – and of a very publishable quality too – we find ourselves needing to fund more pages. The demand for colour rather than black and white is strong too. That costs more.

We warmly thank all those who support us financially, Parish Councils and village organisations, together with our indispensable advertisers. They are solid.

The decisive factor is the number of individual subscriptions. We thank those who already subscribe, mostly by Standing Order – and invite those who enjoy our Magazine and wish it to thrive but who, as yet, do not contribute, to consider whether they might add their support by filling in the enclosed form, and handing it on to their bank. All support is crucial in this finely balanced situation. Thank you, in anticipation of at least giving it some thought.

Editorial Team

ADVERTISING IN THIS MAGAZINE

Invitations have been sent out to last year's advertisers, inviting them to renew, and we are pleased to say that the take-up has been very encouraging. We warmly thank those who entrust their advertising to us. Without them there would be no Magazine.

We are always open to new advertising, particularly in areas/trades/professions where we have no current advertisers. Electricians and plumbers seem to be particularly sought after. Do contact us if you think we might be an appropriate medium for advertising your business or product.

LOCAL FLOODS

– A SECOND DOSE

Storm Henk left a chaotic aftermath: fields swamped, water-meadows looking like boating lakes, roads awash. Happily, this bout of flooding somehow failed to match the destructive levels of our previous floods in October, but, for the benefit of the historical record, we publish a couple of pictures taken by roving photographer, Gary Farmer. Let us hope that this is the end of the flood season – an unprecedented one, and one which makes us all much more uneasy about what the climate-warmed future may hold.

LOCAL FLOODS – the positives – BEALINGS FIGHTS BACK

The first floods resulted in much turmoil, with many people displaced from their homes. Some still are, and restoration is on-going. But the trauma of it all did bring out much community support for those who were struggling with the aftermath of being flooded.



This neighbourly support was recognised in a party given by two of the victims, Roger and Margaret Roseboom. They invited along some of the people who had come together at that time of emergency and who had shown the kind of spirit which is the hallmark of healthy communities. The local response to the floods encapsulated the best of community spirit and made us proud to be part of a community which can respond in this way.

It was a happy occasion, with much sharing of experiences, and a symbol of both resilience and supportive friendships. The hosts presented special awards to people who had been particularly helpful over a very difficult three months. Despite all the recent challenges, Roger has lost none of his old theatrical sparkle, with Margaret, as ever, a wonderfully efficient and energetic foil. Daughter Henrietta was back home to offer her support, and to take this photo, one which deserves a place in Bealings' social history.



Ironically, the party was held in the bungalow which is the Roseboom's temporary accommodation. May they soon be back where they belong, and home again.

SOLAR PANELS - a bad experience. Anyone else?

Your editor wonders whether anyone else locally has had a bad experience with a company which purports to maintain and insure solar panels. In this case, there were ten aborted visits over a three-year period – appointments made, not kept, with an engineer who seemed to be a figment of the company's imagination. Dealings with local Consumer Protection resulted in a pro-forma letter, duly sent, but to which, predictably, no response was received. The three-year contract ran out, with nothing having been achieved, despite the initial payment of a four-figure sum.

The company was called Eco Efficiency and Maintenance – as shown in the beautifully laminated Certificate below.



This company then morphed – without telling us – into Energy Consumption Ltd (Banbury Road, London E9). We managed to track it down via “Companies House” sources. The company visited these parts in 2020, recruiting potential customers, including ourselves. Their sales pitch was persuasive, and, probably like many others, we needed assurance that we were getting the best out of our solar panels. We signed up – and now feel completely de-frauded. If anyone else has had experience with this company, particularly bad experiences, we would like to hear from them, with a view to taking possible further action. Please contact the Editor. (Details on back page)

GATE-HOUSE CARING IN EAST ANGLIA

We have been contacted by the above, offering a free NHS online mindfulness course. The courses are offered to support older adults aged 65 and over and carers and former carers living in Suffolk. The course is said to improve people's attention and memory, as well as reducing loneliness, low mood, stress, anxiety, and chronic pain. Many participants are said to have found it simply helps them deal with day-to-day stresses.

The courses run on 8th or 31st January 2024 and involve a weekly meeting via Zoom for 1.5 hours for 6 weeks. Places are free but limited to around 15. They are also running a course for carers from 26th February. More information can be found on their website: <https://the-mindful-life.com/>

The contact is: *Raechel Schoder, Clinical Research Assistant, Gatehouse-Caring in East Anglia*

POP-UP PUB

The pub popped up again in the Village Hall on Friday 19th January, and was well attended, more than usual, we are told. A warming occasion in the middle of a very cold spell, with the ambience enhanced by background music from Alex Gaston, and delicious jacket potatoes providing the inner warmth. Thanks to all who organised and supported the event. These fund-raising occasions not only bring people together – in the middle of winter – they also contribute importantly to funds. Keep an eye open for the next one. We understand that beer from the barrel will be on offer, with more live music.

NATURE NOTES

OTTER SIGHTING

Our December issue contained an item trying to see the friendly wildlife face of rivers, rather than their current flooding potential. The two may be linked. The sighting of an otter would probably be

less likely in shallow waters, so the following account from Sally in Great Bealings may evoke a frisson of excitement in nature-lovers.

Sally reported that she and her daughter, Darcey, were walking home after school on 12th December, when Darcey suddenly stopped, while crossing the Great Bealings bridge, and said “Mummy what’s that?”, pointing down into the brown rushing water. I looked over the parapet, and my first reaction was: “It’s a log.” But then, to our great surprise an otter popped his / her head up out of the water, swam in our direction, and then stopped again, looking up at us both as if to welcome us back into the village. It then merrily made its way under the bridge and swam off out of sight. We have never seen a wild otter before and I am not sure I will again. But here is hoping! It was a wonderful sight, right here, in the middle of Bealings.



And here is the visual evidence – a picture brilliantly captured by Sally at the time, and one to convince possible sceptics. It’s certainly not a log. Well spotted Darcey!

The Suffolk Wildlife Trust website tells us the following: *With more and more otters to be found across Suffolk, the chances of spotting one have never been better. But although they have been returning to traditional lowland haunts and even establishing themselves in more urban environments, otters remain vulnerable. Pollutants, destruction of riverbank habitat and deaths on the county's roads are all factors that threaten the region's otters. However, sensitive management and building log-pile holts can help mitigate these factors.*

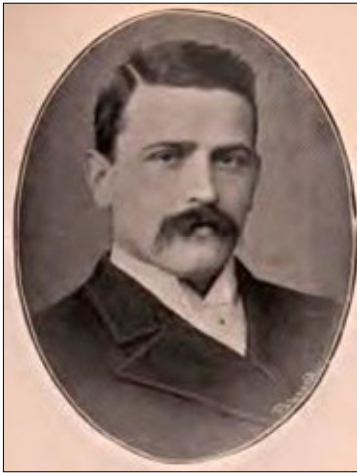
So -river-bank walkers; keep your eyes open. Otters are about.

HISTORY CORNER

WHAT'S IN A NAME? A MYSTERY SOLVED - AND A LOCAL CONNECTION.

It all started back in 1889, on January 9th to be precise – the day my grandfather was born. His parents were Edward and Kate Mutimer of Great Bealings. They had married the previous year. and welcomed their first born into the world at the tender ages of 19 and 20 respectively. They decided to name their son Francis, not a particularly common name at the time. In due course young Francis grew up, married and in 1917 he also named his first born – my uncle – Francis. Uncle Frank (as I knew him) did not have children, but his young brother John – my father – continued the family tradition over 40 years later by naming me Francis. It is of course not uncommon for a particular Christian name to be used by several generations of one family, but why were my family so fond of this name? The only clue I had was a memory of my father saying that his Grandparents – Edward and Kate – had cause to be extremely grateful to a local MP named Francis, who had been particularly helpful and supportive to them as they started their

new life together. This was the only piece of information I had and over the years I have often wondered who was this MP who clearly made a big impression on my Great Grandparents? Initial enquiries drew a blank – Bealings was then part of the Woodbridge parliamentary constituency, and a list of MPs for the period features no one with the name Francis, apart from the Conservative MP Robert Francis Peel, elected in 1910, over 20 years after my grandfather was born. I decided to widen the search. My Great Grandfather Edward Mutimer was born in Wilby in north Suffolk, his father Charles having brought the family from Wilby down to Bealings in the 1880s, while Edward was still in his teens. Wilby would have been part of the Eye parliamentary constituency then and this gave me the breakthrough I was looking for.



The MP for Eye from 1885 to 1906 was one Francis Seymour Stevenson, so he may well have already been known to the family before they arrived in Bealings. Although he was Liberal MP for the Eye constituency for more than 20 years, Seymour Stevenson clearly had strong links with our local area - in 1890 he

purchased Playford Mount as his main residence and in 1895 he became the first Chairman of Playford Parish Council, so it is entirely possible that he was known to my family, both before and after they relocated to Bealings.

Seymour Stevenson was known as something of a philanthropist and supporter of the downtrodden. A quick trawl through Hansard online reveals that he made contributions on several matters concerning the welfare of the rural labourer and agriculture, including the treatment of elderly paupers in workhouses in relation to the Poor Law, the provision of allotments for rural workers, tithe payments and excise duties on agricultural machinery. He also spoke strongly in favour of the Local Government Act 1894, which established Parish Councils for the first time, giving parishioners more of a direct influence in the governance of the villages in which they lived and worked. So, I now knew the identity of the person after whom three generations of my family had been named, but as anyone who has delved into their family history knows, the answer to one question often leads to another question, another mystery to be solved. For now, the question remains – what inspired my Great Grandparents to name their son after Seymour Stevenson and prompted two subsequent generations of the family to do likewise? Perhaps, buried in an archive or some letters somewhere is the answer to that mystery. If anyone reading this can point me in the right direction, I would love to hear from you! Francis Seymour Stevenson died on 9th April 1938 aged 75 and is buried in Playford churchyard, a mere stone's throw from Boot Street, Great Bealings, where I grew up.

Francis Mutimer

We are
always looking for
special people to join
our Highlands team
as carers

Highlands

Where your family is part of ours

We are welcoming new residents
for long term or respite care.

Why not come and join our Highlands family?
Our aim is not only to care for you but to make
you feel especially cared for.

To find out more
visit our website or phone our manager,
Heather on **01394 386204**



HIGHLANDS CARE HOME

Fitzgerald Road, Woodbridge, Suffolk IP12 1EN

Abbeyfield

We are
an independent member
of the Abbeyfield Society

CareQuality
Commission

Overall rating
GOOD

highlands-care.org

BEALINGS VILLAGE HALL AND PLAYING FIELD NEWS

WORKING PARTY: JOHN BELSTEAD PLAYING FIELD

A big thank you to all those who braved the cold weather for the January clean up. We were able to trim back the brambles, clear 16 more “dumpy bags” of leaves and tidy up the footpaths. No planned working party for March but keep your eyes open for news of one in April / May

ROOF & DOOR PROJECT

Here is the latest update from Bealings Village Hall. The last Pop-Up Pub raised over £200 towards the Roof & Door Project and this, coupled with a generous donation from a Little Bealings resident, has now brought the total pledged / donated so far to **£54,369** - unfortunately our target has increased to £95,000 due to rising costs, but we're still over halfway there!

More grant applications have been submitted to reach the target, but your donations and profits from the fundraising events are paramount in showing local support. - a huge thank you to all who participate.

POP UP PUB

Thank you to all the stalwarts who came out to the last Pop-Up Pub. On a chilly night they enjoyed excellent live music by our very own **Alex Gaston**, baked potatoes and our prized raffle.

The next Pop-Up Pub is scheduled for **Friday 12th April 5:00 p.m. - 10:30 p.m.**

Once again, we hope to have live music from **Alex Gaston**. Food will be served from 5:30 p.m. - until we run out, and will be the popular Baked Potatoes with 1 topping for £4.00, extra toppings £1.00 There will also be a raffle, so please bring your donations on the night. Look out for the reminder posters around the Villages and updates on the Bealings & Playford Newsgroup. Volunteers to help are always welcomed!

All profits go towards the New Roof & Doors Project

IT'S COMING!

The Bealings Village Fete will be taking place on

Sunday 9th June between 12 and 4 at

Bealings Village Hall and Playing Field

Food and Drink, Games, Stalls, Boules, Dog Show, Tug of War

Can you Help?

If you have any suggestions for activities or would like to be involved in any way please text or WhatsApp Sue on

07770454802 for a chat.

The Fete is being hosted by Great and Little Bealings Parish Councils to raise funds towards the Village Hall Roof and Door fund.

RMC

WINDOWS



FOR ALL YOUR REPLACEMENT WINDOWS, DOORS, CONSERVATORIES AND GENERAL BUILDING WORK

TEL 01394 448403

MOB 07766228552

Pointers View
Boot Street
Great Bealings
Woodbridge



Lighthouse
For a brighter future, free from domestic abuse

Fundraising for Lighthouse Women's Aid

www.lighthousewa.org.uk

SPRING CEILIDH

Saturday 16th March 2024

Bealings Village Hall IP13 6LH

7-11pm



Put on your dancing shoes for an evening with the incredible

Fairgreen Ceilidh band

www.fairgreenceilidh.co.uk

All welcome, with the bands experienced caller, there'll be time to get to know all the steps!

Sausage & Mash Supper,
Cash Bar & Raffle Tickets:

£20 each, includes supper



Scan Me For
Tickets

The Granary Bed & Breakfast

HALL FARM ROAD, GREAT BEALINGS IP13 6NY

Two beautiful en suites, with king sized beds:- delicious breakfast brought to your rooms at time of your choice.

Phone Leah or Julian on 01473 735880



www.woodbridgebb.co.uk

Leah Hinks' Pottery Classes at The Granary

Ever been curious to try out pottery? Artist and experienced potter Leah runs two after-school classes on Wednesdays. The classes take place in her beautiful bright studio, and are perfect for children to explore their creative side.

Leah also offers adult classes on Tuesday evenings.



All classes are all back to normal and if you would like to join, just contact Leah for more details.on 01473 735880.

GREAT BEALINGS

RECTOR

Father Nigel Prior, St Mary's Rectory, 11 Church Street, Woodbridge. 01394 610424

PARISH COUNCIL CLERK

Mrs Dee Knights, Dunure, 39 Avocet Lane, Martlesham Heath, IP5 3SF Ips 624240

PCC SECRETARY

Mr Eric Barnett, Southernhay, Lodge Rd, Great Bealings Ips 738803

ST MARY'S

CHURCHWARDEN'S NOTES

LOOKING BACK

Our Christmas "season" was short but intensive. The Carol Service on December 22nd was said by some to have been the most enjoyable for many years, featuring as it did the Woodbridge choir, and a range of readings, including poetry, presenting new angles and perspectives on familiar themes. Our thanks to all our readers, who did full justice to the content of a wide range of festive readings. For a significant part of the service the church was just candlelit. The contrasts between the light and the darkness were eloquent in themselves, reminding us of some of the darkness in our present-day world, and the need for light to penetrate it.

We also thank Julian and Leah Haywood Smith for ensuring that those attending were well warmed by the mulled wine on offer.



The floodlit church elicited a number of pictures from people attending, together with reassuring compliments about the occasion.

Just two days later we enjoyed a

Christmas Eve service, effectively our local celebration of Christmas itself. Our thanks, as ever, to all who contributed to making the church look festive, with splendid displays of flowers.

LOOKING AHEAD

Our pattern of 1st of the month Communion Services at 9.30 is set to continue into 2024, as is our regular Morning Prayer service on the third Sunday, at 10.30. That service is taken by Readers and additional local volunteers. An opportunity for quiet reflection. Refreshments are served after all services.

CHURCHYARD

The winter sleep was rudely interrupted by storm Henk. Not only did it produce much flooding of the surrounding fields, but it also brought down one of the ancient limes adjacent to the church wall. The picture is dramatic, and the imagination quickly focuses on what might have happened had anyone been passing along the path at the time.



Amazingly the trunk landed precisely four-square on one of the brick pillars, which took all the weight and prevented further damage to the wall. Sadly, the lantern

structure above the gate was completely destroyed, and will have to be replaced. Happily, Strutt and Parker on behalf of Lord Cranworth's Grundisburgh estate, responded promptly, and the trunk was expertly removed, the church path made clear, and the footpath re-opened/reopened. We thank them for their speedy response – a knowledgeable delegation was quickly on the scene to assess the damage and plot the way forward.

SERVICES FOR FEBRUARY

Sunday February 4th: 9.30 a.m.

Family Communion (Candlemas)

Sunday February 18th: 10.30 a.m.

Morning Prayer

Do check up on the St Mary's, Woodbridge website for other possible services.

RECTOR'S "SURGERY"

We offer people the chance to invite our Rector into their homes to get to know him better, and vice versa. The regular day for this is Monday, either morning coffee or afternoon tea. If you would like to fix a future slot please contact churchwarden, Norman Porter (nhp@rillcott.co.uk), who is i/c the rota, and can offer possible future dates.

*Norman Porter, Churchwarden
(nhp@rillcott.co.uk)*

PARISH COUNCIL

Summarised notes of the parish council meeting held on 9th January 2024

FLOODING

Regan Scott reported that he had raised a Freedom of Information request to SCC regarding the specifications for work relating to flooding prevention agreed in the new Highways contract with Milestone Infrastructure.

REPORTS

County Councillor Elaine Bryce – A report has been received by CH and will be circulated to Cllrs and attached to the minutes on the website.

District Councillor Colin Hedgley (CH) and District Councillor Dan Clery

Reports have been circulated to Cllrs and full copies are attached to the minutes on the website. CH verbally clarified that in its response to the National Grid Sealink Consultation, ESC is pressing for undersea cables. He advised that ESC propose to increase next year's Council Tax by just under 3%.

PLANNING APPLICATIONS

Decision Updates: DC/23/2887/FUL – Little Oaks and DC/23/3783/FUL – Seckford Rise have both been permitted by ESC. The following are all still awaiting decision:

DC/23/2787/VOC – Barn C, Former Woodbarn Cottages,
DC/23/0319/LBC and DC/23/0363/FUL – Seckford Hall

Local Validation List – Consultation – The PC has no comments on this.

REVIEW OF NEIGHBOUR PLAN

Sue Prentice (SP) reported that this is still with ESC. CH confirmed that it is currently included with the items for decision making.

OTHER PLANNING MATTERS

CH reported that the flooding on Martlesham Road by the new building is being looked at by ESC.

EMERGENCY PLAN

SP had circulated some guidelines which had been provided by the SCC Emergency Plans Officer. Discussion took place as to the merits of a formal document. It was decided that a local Facebook page would be the best way forward. Caroline Saunders (CS) will produce an "idiots guide" to signing up to a Facebook page, (*see information at the end of these notes—Ed*) which can be circulated via FLN.

VILLAGE FETE 2024

This has been confirmed to take place on 9th June from 12.00 – 4.00 p.m. and will be a joint event with Little Bealings. Money raised will be donated to the fund for the new roof and doors at the Village Hall. Several suggestions were made for various stalls and CS recommended

getting the Primary School involved.

HIGHWAYS AND FOOTPATHS

SAVID/SID – CH advised that some more SIDs have been obtained, gradually every village is getting one. John Carter-Jonas (JCJ) confirmed that ours is still working well but he has not yet progressed with obtaining a dedicated laptop.

Damage to Boot Street Bridge – a resident has reported to SCC that there has been vehicle impact to the bridge causing damage to the brickwork. SCC have inspected the bridge and have noted some damage to the SW wingwall, but stated that the parapet wall remains stable and there is no requirement for any immediate repairs or other temporary measures.

ENVIRONMENTAL ISSUES

Trees – JCJ has had some enquiries from people who may be interested in having them.

Litter and Fido Waste Bin Policy – The PC has no comments on this.

FINANCE AND ADMIN

Authorisation of payments – Eight payments were authorised for office expenses, Clerk's salary and PAYE for January and February, magazine postage, website registration fee and SAVID subscription.

Budget and Precept for 2024/25

A draft budget for £7870 and provisional precept amount had been previously discussed at the PC meeting in November. It was unanimously agreed that this budget be adopted for 2024/25. It was resolved to implement a precept of £8000, which would cover the budget and include a small amount for start-up costs for the fete. This represents an increase of 8p per week for a Band D property.

Other Finance and Admin matters - The Bank Reconciliation was approved for signature.

Fynn-Lark News

A letter had been received from the editor relating to the financial position of the magazine. This had been discussed along with the budget where it was

decided against increasing the PC's annual contribution.

The public are welcome to attend any Parish Council meeting and may speak for a maximum of 3 minutes on any item on the agenda in the Public Participation session. Full draft and approved minutes of the Parish Council are available on the Council's website. The agenda is published approx. a week in advance of a meeting.

Dee Knights – Clerk 01473 624240

Email: greatbealingspc@hotmail.co.uk

Website: www.greatbealings.co.uk

Great Bealings Parish Council would welcome feedback and suggestions as to how we can replace the existing emergency plan (paper-based) with an effective communications strategy.

One of the very effective tools already available is the Little & Great Bealings Facebook page. GBPC has already been using this community Facebook group to share communications we receive from various stakeholders, such as Suffolk County Council and EA One. It is well worth villagers joining this group if they are Facebook users, as it also is a good place to check in for anything from lost glasses, changed bin collections or community events such as the Pop-Up Pub and the Plant Sale. Over 500 local people are signed up to the group. The great thing about Facebook is that anyone can contribute, with posts moderated by the group administrator. Many thanks to those who set that up.

If you're not already a Facebook user, there are some excellent guides on how to get onto Facebook at Age UK. If you put 'how to use Facebook Age UK' into Google, that will take you to a very useful advice page on the Age UK website.

Caroline Saunders

BEACON HILL FARM SHOP

Home grown daffodils, Sunflowers
Pumpkins, sweetcorn, Courgettes,
Honey from bees on our farm.

We stock sacks potatoes,
veg, eggs, Apple juice.

Flo gas, Logs, Kindling, coal,
Skinners dog food.

Wild bird and chicken feed,
Wood shavings,

Salt for water softener and road

Bealings Road, Martlesham IP12 4RP

Open Tues - Fri 9-5 & Sat 9-12

Phone 0770955275

email: beaconhillfarm@hotmail.com

BYGONES AND CURIOS

Collectable objects of
age and interest for sale

View

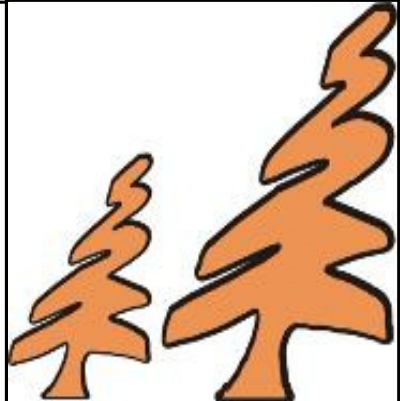
by appointment...
browsers welcome!

01473 620213

PAULS TREE SERVICES LTD

Covering Suffolk

- ★ Free Quotes on Request
- ★ Pruning, Reshaping
- ★ Trees & Shrubs
- ★ Fully Insured
- ★ NTPC Qualified
- ★ Tree Surgery & Felling
- ★ All Waste Chipped & Removed from Site
- ★ Emergency Services Available
- ★ Stump Grinding



FELIXSTOWE 01394 277776 MOBILE 07979 226497

Lazy Acres, Falkenham, IP10 0QY

www.paulstreeservices.co.uk

FRIENDS OF GREAT BEALINGS CHURCH (in partnership with Friends of St Mary's Church, Woodbridge)

A list of dates and events is being drawn up, but hopefully, in the course of 2024 we will have our Annual Plant Sale (Definitely on April 27th – useful to know as a target date for growers) – and our annual Autumn Clear-up, Ploughman's lunch and Harvest Festival, all scheduled for the week-end of October 5th/6th. It is also possible that, after a break of one year, we organise another Open Gardens, date to be determined, but garden-openers please let us know if you would support such an enterprise. It is also time for another concert. Possible performers are being approached. Other suggestions are very welcome. These are the events which bring people together, community events, with the church as part of that community.

CHURCH FLOODLIGHTS

Nothing specific this month.

If you would like the lights to shine forth for personal celebrations or commemorations please drop a note in to Norman Porter, Rill Cottage, Kiln Lane with payment, explaining why you would like the church floodlit, so that it can be recorded in the FLN, for posterity's benefit. If urgent, a holding email (nhp@rillcott.co.uk) will do the trick, with payment to follow.

BEALINGS PLANT SALE

SATURDAY, APRIL 27TH, 2024

10.00 A.M. – 12.00 P.M.

It's hard to imagine on these cold wintery days, but planning has started for our annual village plant sale.

We have a fantastic team of volunteers in place, but we are seeking someone to head up the refreshments on the day. You would have an experienced team to work with, but would be required to do a bit of planning and organising of supplies beforehand! If you're interested in helping, please contact Caroline

Saunders on 07789 713576.

We are also always on the lookout for anyone who can help manning tables at the plant sale – we are a cheerful bunch, and try to keep organisational meetings to a minimum beforehand, so we promise it won't become too onerous!

In the meantime, we would love you to earmark any surplus seedlings, plant divisions or unwanted plants for sale on the day. We are also on the lookout for garden bric-a-brac, be it garden books, unwanted seeds, working tools you no longer need, or anything else we may be able to resell for you. All proceeds are split evenly between the two village churches.

Happy gardening, and we hope to hear from you soon!

Caroline & the Village Plant Sale team
Caroline Saunders
Grotto Farm, Great Bealings
Woodbridge Suffolk IP13 6NW
01394 387681 or 07789 713576

WREATH WORKSHOPS

In early December, two Christmas Wreath Workshops were held at the Bealings Village Hall to raise funds for Home-Start in Suffolk. I am so grateful to Maggie Davis, renowned local artist, for her leadership and the more than 120 people and wonderful sponsors--Becketts Investment Management and Larking Gowen Chartered Accountants and Business Advisors--who raised an astonishing £3,834 to benefit local Suffolk families. Thanks also to the amazing Corinne Jarvis-Fear for all the wonderful refreshments.

This year Home-Start has seen a large increase in the number of families who need help. If you have ever thought of donating or becoming a volunteer, or if you know someone who needs help, please get in touch. The head office telephone number is 01473 621104 and the website is <https://www.homestartinsuffolk.org/>.

Helen Clarkson-Fieldsend, Trustee

**BATES
WELLS**

**& BRAITHWAITE
SOLICITORS**



For you and your family

Providing legal advice when you need it most

Our services include:

FAMILY LAW:

- Divorce & separation
- Financial & property issues
- Pension agreements & entitlements
- Family mediation
- Children & social care
- Pre-nuptial/living together agreements
- Civil partnerships
- Same sex relationships

RESOLVING DISPUTES:

- Personal injury
- Clinical negligence
- Houses, property & neighbours
- Contentious wills & probate
- Contract disputes
- Consumer affairs/faulty goods & service

PRIVATE CLIENT SERVICES:

- Wills, trusts & probate
- Powers of attorney
- Residential property

FOR FURTHER INFORMATION CONTACT



Denise Head
Partner/Solicitor & Mediator
T 01473 219282
E denise.head@bates-wells.co.uk



Christopher Mason
Head of Dispute Resolution
T 01473 295524
E christopher.mason@bates-wells.co.uk

29 Lower Brook Street, Ipswich, Suffolk IP4 1AQ

www.bates-wells.co.uk



Dear
Neighbour

We wanted to reach out and introduce ourselves as Your new local Insurance advisers, we have over 10 Years experience and we are fully qualified and Regulated by the financial conduct authority. We pride ourselves on offering you the best family protection using the UK's leading providers. Our recommendations are a FREE advice service.

Our Services:

- LIFE INSURANCE
- CRITICAL ILLNESS COVER
- INCOME PROTECTION
- WILLS
- MORTGAGES



07979805502



info@umbrella-financial.co.uk

**GET IN TOUCH AND
RECEIVE YOUR
OPTIONS TODAY!**



UMBRELLA
FINANCIAL
COVERING YOU & YOUR FAMILY

www.umbrella-financial.co.uk



DJC Services



We at DJC Services offer a wide range of garden and landscaping services to both domestic and commercial customers our services include...

Garden maintenance

Garden & land/site clearance

Hedge cutting & strimming

Lawn cutting

Hedge and tree stump removal

Fencing

Sheds

Turfing

Excavating

Installing farm tracks and gateways

Ponds

Mini digger hire with driver

Wheel digger hire with driver

Tow-able 6" shredder hire with operator

Vibrating roller and breaker hire with operator

General property maintenance and repairs



Registered Waste Carriers

Fully Insured

your local friendly & reliable service...

Call **Dan** on **07938809801** or **01473625441**

or email us on: *carter9dz@btinternet.com*

LITTLE BEALINGS

PRIEST IN CHARGE

Reverend Gary Jones

revgaryjones1985@gmail.com

07714 614095

PARISH COUNCIL CLERK

Mrs. Carol Ramsden,

littlebealingspc@btinternet.com

07731 456133

PCC SECRETARY

Toni Cornish

lbpcsecretary@gmail.com

07583 743695

MONDAY 4 MARCH 2023 – 7.00 p.m. BEALINGS VILLAGE HALL

Presentation and the opportunity to ask questions about:

- ◆ **Little Bealings Neighbourhood Plan**
- ◆ **Bealings Village Hall: Replacement Roof Project**

LITTLE BEALINGS ANNUAL PARISH MEETING

NOTICE IS HEREBY GIVEN THAT THE ANNUAL PARISH MEETING WILL BE HELD IN

BEALINGS VILLAGE HALL (*not The Angela Cobbold Hall*)

at 7.30 p.m. on Monday 4 March 2023

UNDER THE CHAIRMANSHIP OF MR IAN RANSOME (CHAIRMAN OF THE PARISH COUNCIL)

Parishioners of Little Bealings are invited to attend and take part in the meeting. The parish meeting may by law discuss all parish affairs and local parish electors may pass resolutions about them. The following matters have been placed on the agenda: -

Agenda

Apologies for absence

Minutes of the Annual Parish Meeting held on 6 March 2023

Any Matters Arising

Parish Council Chairman's Report

Other Reports

Parish Council Footpath Wardens

Neighbourhood Plan Working Group

County and District Councillors

Bealings Village Hall Trust

Fynn Lark News

The Parochial Church Council

The Angela Cobbold Hall

Sinks Valley Environment Protection Group

Any Other Reports

Any other business put forward from the floor

Ian Ransome, Chairman of the Council
website: littlebealings.onesuffolk.net

ANGELA COBBOLD HALL NEWS

THANK YOU

Grateful thanks to everyone who generously contributed to the collection for the FIND food bank. The bags were dropped off in time for the Christmas distribution to families in need in the Ipswich area. Thank-you to Gill Peck who shared her Origami skills. Everyone enjoyed the challenge of making Christmas themed decorations, including Mary & Joseph and lit up Christmas tree among other things. Seasonal refreshments were also enjoyed! We hope Gill will organize another session in the future!

Margaret Roseboom inspired the group at the Gardening Club meeting with some beautiful but simple ideas for decorating the house for Christmas. Extra support and advice were given by Sue Prentice and Tracy Herrington as members of the group made table decorations with all the necessary materials provided. The beautiful results were taken home to be enjoyed. Once again seasonal refreshments helped to make the evening special.

Thanks to Tracy Herrington, flowers celebrating Christmas were placed on the grave of Angela Cobbold, in All Saints Churchyard, Little Bealings and in whose memory the Hall was built.

Further thanks to everyone who made the Community "Leftovers Lunch" in January a happy social occasion. Especially everyone who washed up and tidied the Hall, and to Tracy Herrington for the arrangements of Spring Flowers that decorated the tables.

The next Lunch will be on Tuesday 6th. February 12.30 p.m., Beef Cobbler followed by Yvette Robinson's Bread & Butter Pudding!

Bookings 01473 620213.
pandvcarr55@gmail.com

"WARM WELCOME" EVENTS.

(Funded by Council/Government grants)
Time for Tea on Sunday December 17th.
and January 21st from 3-5 p.m. served

hot drinks and snacks and cakes etc. The next Time for Tea is on Sunday January 18th. No booking needed just turn up and enjoy!

There is a Friday Coffee Morning and Foot Clinic every six weeks. Hot drinks biscuits and cakes available from 10.00 a.m. to 12.00 noon.

The next Coffee Morning will be on Friday 16th. February. Bookings for Foot Clinic ring Charlotte on 07712448775

ACH COMMUNITY LUNCH

A note to express our thanks to Vicki and Peter Carr for organising such a festive Community Lunch in December. The Humming Birds provided musical entertainment and the menu was very tasty. Profits amounted to £100 and were donated to the charity SENSE which had been nominated by Joan Moon. Sense supports everyone who is deafblind or has complex disabilities.

We have now also met for our January lunch, a delicious 'Leftovers' menu enjoyed by everyone. Thanks too to all those involved with the laying up, serving, table flowers - and washing up!

Liz Royle

QUALITY OF PLACE AWARD

Community Hub and Café at All Saints Church has won the prestigious East Suffolk District Council Quality of Place Award

The October issue of this Magazine carried the news that the Community Hub and Café in Little Bealings Church, designed by Mullins-Dowse Architects, had been short-listed for the above award. On November 29th, 2023, it was announced that it had actually won the award, coming first in a field of 12 finalists. The awards recognise the best in design and conservation in East Suffolk.

The award which is "for any built or

natural environment project designed to benefit the community in which it was built.” Judges looked at community engagement with the project and the public benefits of the scheme and were particularly impressed by the enthusiasm and passion of the many volunteers who helped to steer the project for the past 7 years through myriad consultations and reviews. Their efforts culminated in sensitive and welcome upgrades to the fabric of the Church by Stowe Builders and the installation of a hand-crafted kitchen by Heritage Coast Cabinet Makers, designed to fit quietly within the confines of the one-room 700-year-old listed building.

but also because it was a labour of love for me. I grew up in the village, sang in the Church choir and have returned to raise my family here. Preserving and improving listed buildings--especially Churches-- takes particular care and attention to detail. Conservation is something that excites me and this type of project inspires us to be creative in developing appropriate solutions, both for the building and for the community. As a member of the community today, it is wonderful to see how my children and I can come and enjoy all the activities both in the Church and outside too, and we love the homemade treats served at the Absolutely Divine Cafe.”



Archdeacon Rich recently commented, “Historically, parish churches have been at the heart of village life and the reordering of All Saints Little Bealings has been imaginatively and sympathetically carried out, creating a warm inviting space for a wide range of worship and community activities.”

As Local District Councillor Colin Hedgley said, *“I am very pleased that the Little Bealings Hub won this award. A great deal of hard work went into making it a success and it is good news that the East Suffolk Awards Committee recognised the benefit to the community.”*

Several new regular activities and events have taken place -- including flower festivals, tavern evenings, Bealings Borrowers - an after-school eco group, Suffolk Constabulary meetings, Alpha Bible discussion groups, jazz and WI concerts and performances, pilates classes, local choir practices, the Suffolk Cinema Club, even dog sniffing workshops—and the Café has drawn wide praise for its incredible menus and very tasty coffee! Services are also enhanced by the new heating system and the after-worship coffees are first rate!

Reverend Gary Jones said:” *As a Church community we are pleased with this award which recognises all the hard work that has been put in by everybody for this wonderful facility for the whole community to be able to use.”*

We look forward to seeing you at our award-winning community gathering place, where there is always a warm welcome! For more information about Little Bealings Church and any events and activities, please go to <https://littlebealingschurch.onesuffolk.net>.

Elizabeth Sinha, Director and Architect added, *“I submitted this project for consideration not only because of the quality of the work that was undertaken,*

The Angela Cobbold Hall, Little Bealings

The Hall &/or Reading Room and modern Kitchen are available to hire for social occasions, classes, charity fund raising events and private parties.

Private hire can include the use of facilities including
smart television flexible staging coloured LED lighting
table tennis small snooker table exercise bikes
dance mirror board games

- ◆ Seating and place settings for up to 50 people
- ◆ Parking for 5 cars
- ◆ Cutlery, crockery and glasses can be borrowed for home use

Further information, enquiries and bookings 01473 620213
pandvcarr55@gmail.com



RYDER-DAVIES & PARTNERS **Veterinary Practice**

Looking after your pets for over 45 years

-  Dedicated team of experienced vets, nurses and support staff
-  24 hour care provided by our own vets and nurses
-  Pay monthly healthcare plans available for cats, dogs, rabbits & horses

Proud to be an independent practice since 1973

Woodbridge

18 Grundisburgh Road
Woodbridge
IP12 4HG
01394 380083

Ipswich

412 Woodbridge Road
Ipswich
IP4 4EJ
01473 274040

Rendlesham

Walnut Tree Avenue
Rendlesham
IP12 2GG
01394 420964

Felixstowe

83 Queens Road
Felixstowe
IP11 7PE
01394 284554

To find out more visit our website: www.ryder-daviesvets.co.uk

EVENTS AT THE ANGELA COBBOLD HALL

FEBRUARY

* indicates the event is part of the Warm Welcome scheme.

Friday 2nd	7.15 p.m.	FISH & CHIPS* Please place your order beforehand via the contact details at the bottom of the page.
Monday 5th <i>from 1.30 p.m. (and every week)</i>		KNIT & NATTER*
Tuesday 6th	12.30 p.m.	COMMUNITY LUNCH <i>pandvcarr55@gmail.com</i> or 01473 620213 to book
Thursday 8th <i>(and every week)</i>	9.30 - 11.30 a.m.	TAP DANCING
Friday 9th	6.30 p.m.	SOCIAL FRIDAY* Licensed Bar, Darts, Snooker, Table Tennis, Quoits, Exercise Bikes, Chess, Board Games, etc. Food provided.
Thursday 15th	2.15 - 2.45 p.m.	LIBRARY VAN
Friday 16th <i>from 10.00 a.m.</i>		COFFEE MORNING* & FOOT CLINIC For appointments, contact Charlotte on 07712 448775
Friday 16th	6.30 p.m.	SOCIAL FRIDAY
Sunday 18th	3.00 - 5.00 p.m.	'TIME FOR TEA'*
Friday 23rd	7.30 p.m.	'THE BEALINGS SKY AT NIGHT'* Everything you've always wanted to know about the universe but never dared ask. Carl and Gary Cornish lift the lid on the great mysteries of the cosmos, in what promises to be a fascinating and practical exploration of our night sky. (coats needed!)

MARCH

Friday 1st	6.30 p.m.	SOCIAL FRIDAY*
Tuesday 5th	12.30 p.m.	COMMUNITY LUNCH <i>pandvcarr55@gmail.com</i> or 01473 620213 to book.

Gardening Club will resume in March.

email: margaretroseboom@yahoo.co.uk
tel: 01473 735153



EAST SUFFOLK
WARM WELCOMES

**HAVE YOU EVER THOUGHT ABOUT TRYING SEQUENCE
DANCING?**

BEGINNERS AND IMPROVERS CLASS
Bealings Village Hall

Starting Tuesday 9 January 2024

8.15 p.m. - 9.00 p.m. £12 per couple

Enquiries: Teresa
on 07929 310480
teresajay1@gmail.com



island house
DENTAL CARE

5 Quay Point, Station Road, Woodbridge, IP12 4AL

Email: reception@islandhousedentalcare.co.uk

Telephone: 01394 388008

islandhousedentalcare.co.uk



ALL SAINTS CHURCH - WREATH WORKSHOP

In early December 2023 we held our traditional wreath making workshop at The Angela Cobbold Hall in Little Bealings. As an added bonus this year, we also introduced the opportunity to create a table centrepiece too.

Just under 30 people arrived on Saturday 2nd December, ready to create their very own unique **traditional** Christmas **Wreath**. We know there is always a little apprehension and self doubt when people first arrive, as they begin to embark on the reality of transforming a bare rattan circle into a truly fabulous wreath with the locally sourced foliage.

After a few hours of enjoying festive refreshments and good company, everyone proudly left the hall with their beautiful creations, ready to take pride of place on doors and tables. There are no finer words than proudly announcing 'I made that'.

We wanted to extend our thanks to Maggie Davis, an amazing patient and talented Little Bealings resident artist who led the event. Also, thanks to John Wittgreffe and Francis Mutimer for sourcing the foliage. Thank you to the Trustees of ROPETH for allowing us to use the Angela Cobbold Hall once again. Finally, a sincere thank you to everyone who attended. The workshop raised **£460** for All Saints Church, which will help us to continue to support and grow our amazing church and its facilities.

After the event we received many kind messages exclaiming what an enjoyable event it was, and there was a thirst for us to hold future events - watch this space for forthcoming spring events.

Toni Cornish, PCC Secretary



VOLUNTEER CLEANER

Could you spare a couple of hours each week to help keep our church clean? We are seeking a volunteer to help maintain the general appearance of our church, to undertake general cleaning of our facilities including the kitchen and toilet areas.

If you can spare some time to help us to continue to provide a safe and clean space for our community, visitors and hirers, please do get in touch.

Email lbpcsecretary@gmail.com



All Saints Church Little Bealings

Are you looking for a quiet space to hold an event, perhaps a church away day or regular group meet-ups? All Saints can offer a flexible space for multiple uses.

Our church has a very special, warm and unique character, with its interior arches. The acoustics are amazing and there are large windows in the North Aisle that cast plenty of light.

- **Fully fitted kitchen**
- **Wi-fi**
- **Large screen multimedia system with projector**
- **Central heating/cosy log stove**
- **Comfortable seating**

Email lbpcsecretary@gmail.com for further hire information

Photo credit John Lanagan Photography

WORD FROM THE STUDY

Well, first of all, Happy New Year! It seems such a long time ago, but it was lovely to see so many people turn out for our Christmas services, particularly our Carol Services in both Little Bealings and Playford; the mulled wine and mince pies were enjoyed in abundance. It was really heart-warming to see so many people. I am pleased to say our attendances overall were up on last year.

No sooner have we put the decorations back in the loft, than we find ourselves on the fringe of Lent. It soon comes round, doesn't it? Lent is a period long established in the Church lasting 40 days and 40 nights in the lead up to Easter. A time when Christians observe a period of fasting or just giving up something like sugar in our tea or chocolate. The purpose is to remind us of the 40 days and 40 nights that Jesus spent in the wilderness, being tempted by Satan.

The early Church often used Lent to prepare those who were seeking to be baptised or confirmed; although we do use many other periods throughout the Christian calendar.

For us as a Church, the period of Lent is a reminder of the many blessings that God has bestowed on us and what part we play in God's creation.

Romans 12, verse 18, has these words "If it is possible as far as it depends on you, to live in peace with everyone". If only those who exercise power in all walks of life were able to pay reference to this, what a better place we would be in, rather than day after day, hearing of conflicts in The Ukraine and now The Middle East. It is heartbreaking to see people suffering at the hands of those who choose violence to obtain their end.

Year after year, we tell the Christmas story of Christ the Prince of Peace. His story must become our story if we want change and the real meaning when Christ says, "I have come in order that you may have life, life in all its fullness."

So, whatever you are doing for Lent, whether you are giving something up, doing something different, can I encourage you all at this time to think on that verse from Romans "What can I do to make the world a better place?" Jesus spoke about the mustard seed, a small grain, with the ability to grow large.

I wish you love, joy and peace as we approach this most Holy and penitential season.

Every blessing to you all. *Reverend Gary Jones, Local Minister*

FEBRUARY SERVICES

All Services at 10.00 a.m.

Sunday 4th February Morning Prayer *St Mary's Church, **Playford***

Sunday 11th February Morning Service
*All Saints Church, **Little Bealings***

Wednesday 14th February Ash Wednesday Service and Imposition of Ashes
*All Saints Church, **Little Bealings***

Sunday 18th February Family Communion *St Mary's Church, **Playford***

Sunday 25th February Family Communion
*All Saints Church, **Little Bealings***

Every Wednesday 10.00 a.m. Service of Morning Prayer
*All Saints Church, **Little Bealings***

**TRADITIONAL MOLECATCHER
& WARRENER**

OVER 50 YEARS EXPERIENCE
NO JOB TOO SMALL OR TOO BIG
FULLY INSURED



A MEMBER OF ASSOCIATION OF
PROFESSIONAL MOLE CATCHERS
**WE CONTROL MOST PESTS AND
VERMIN.**

EXPERTS AT RABBIT CONTROL,
TRAPS AND TRAPPING

NO CALLOUT FEE AND NO VAT

TEL: GRUNDISBURGH

01473735168 or **07765 643484**

WWW.DISCOUNTPESTCONTROL.ORG

**DON'T GET STUNG
BY SILLY PRICES**



WE ARE FULLY INSURED AND
QUALIFIED TO CARRY OUT THIS
WORK

BASED IN GRUNDISBURGH WE
OFFER A QUICK RELIABLE
SERVICE *DOING GREAT SINCE*
1988

PRICES START FROM £35

TEL: **01473 735168**
or **07765 643484**



Architectural Services

Friendly and bespoke architectural
design service for clients
throughout Suffolk and beyond.

Extensions, conversions,
alterations, new builds.

email: nathan@naarchitectural.co.uk

www.naarchitectural.co.uk

phone: **01473 611682**

CIAT Registered Practice



ALISON CHEESEMAN ATCL LTCL

Enjoyable, fun, piano lessons tailored
to individual needs and expectations,
with the choice of playing on either
digital or acoustic pianos, or both.

Working towards exams, ABRSM,
Trinity Guildhall, music theory, GCSE
practical music performance, or
perhaps wanting to play piano for
pleasure?

Piano lessons with a smile from a
lifetime of musical experience.

All abilities most welcome.

Email:

Alison.cheeseman@btinternet.com

Tel: 01473 611618



PLAYFORD

PRIEST IN CHARGE

Reverend Gary Jones

revgaryjones1985@gmail.com

07714 614095

PARISH COUNCIL CLERK

Mrs. Marian Hedgley, The Coach House, Playford Mount, Great Bealings, IP13 6PH
lps 738468

PC SECRETARY

Mrs. Eileen Stennett, Lux Farm, Playford Road, Playford

lps 635236

PARISH COUNCIL

These are condensed notes of the proceedings of the Playford Parish Council meeting held 10th Jan 2024.

A full version of the minutes appears on the website: www.playford.org.uk

COUNTY COUNCILLOR'S REPORT

Apologies for absence received from Co. Cllr Elaine Bryce - her written report is appended to the full minutes on the PC WEBSITE.

DISTRICT COUNCILLORS' REPORTS

These reports are appended to the full minutes on the PC website. Dist Cllr Colin Hedgley further reported ructions over the transmission of electricity coming from wind farms on the East coast via pylons – the proposed routes are shown on the National Grid website. Proposed council tax increase for 2024-25 is 2.98% and Police & Crime Commissioner is also looking to increase the amount of the Police element. Colin is happy to help constituents with any problems
CONCERNING COUNCIL BUSINESS.

ACTION POINT REVIEW

- A date for the appeal of the reinstatement of the unregistered footpath between Butts Road and Church Road is still awaited, it is likely to be in approx 6 months' time and witnesses will be required to testify as to previous usage.

- More fallen trees have been reported and are being dealt with by Highways

PROW.

- Some of the silt deposited in Church Lane by recent flood waters has been cleared but much has been compacted by the traffic and still needs attention – this has been re-reported to Highways.

- We await clearance of the drainage ditch in Butts Road near entrance to the village hall – East Suffolk Services has been contracted to carry this out.

See Action log appended to the Minutes on the website for more details of these items.

EMERGENCY PLAN

An Emergency Plan is being drafted for Playford and a village meeting will be required at some stage to discuss this with residents and to ask for volunteers to be on standby to provide assistance if required.

Finance

Payments were authorised for the clerk's November and December salary, tax to HMRC and costs of improving the bottle bank area (a donation of £100 was agreed for the team helping to do this work). Budget for 2023-24 is on track and the bank reconciliation was agreed. Quarterly interest on the reserve account was received on 4th December. Budget for 2024-25 was discussed and the amount of Precept required for next financial year was agreed at £11,000.

HIGHWAYS

Drainage and traffic priority improvements on the C324: work

schedule for this project has been put back by recent bad weather and we await a new start date.

The new signage to deter heavy traffic in Church Lane should be installed in the Spring when the weather has improved.

The possibility of Church Road being awarded Quiet Lane status is now remote as the funding for this project has finished.

The SIDs report was circulated showing data for December, average recorded speeds were similar to recent levels but the highest speed of a vehicle travelling in Butts Road was found to be 60mph.

NEIGHBOURHOOD PLAN

The draft Neighbourhood Plan is currently with East Suffolk planning team and will be passed to the Examiner shortly – the examination should commence on 22nd Jan and this will take approx 7-8 weeks.

OTHER MATTERS

Someone is needed to spearhead the project of repairing the Boules Piste and to cost up the materials required - a few volunteers have offered to help with the work involved. It was agreed that surplus funds from the bottle bank repairs should be used to fund this work and the Village Hall committee has kindly offered to contribute towards the costs.

A suggestion has been made that several Bee Cafés could be housed in Playford to promote pollination and to link up with others in nearby parishes to form a Bee corridor – this will be discussed further at the next meeting.

Two vacancies still exist for new councillors, it is hoped that one may be filled soon.

DATE OF NEXT MEETING

Weds 6th March 2024 at 7.00 p.m.

Marian Hedgley – Clerk 01473 738468
e-mail: playfordpc@hotmail.co.uk
website: www.playford.org.uk

PLAYFORD W.I .

We started the new year by learning a new craft in January. ‘Cricut’ is a system to design and personalise gifts, clothes, cards using a smart cutting machine and app, bringing digital designs to reality. We all really enjoyed a fascinating presentation by our president Emma who then also ran a workshop allowing us to have a go ourselves. We will be finishing our creations next month.

From crafting to campaigning ...such is the diversity of the WI that in February we’ll also be discussing 4 topics shortlisted for national lobbying and action: *Dental Health Matters*, calling for a review of inadequate NHS contracts to increase access to dentists; *Impacts of poor housing conditions*; *‘Say no to gambling advertising’*- in the UK there are 400 gambling-related suicides a year, some countries already ban advertising, should we; and *Improving outcomes for women in the Criminal Justice System* - reducing the number of women who have committed non-violent offences from being imprisoned with the devastating consequences on their families and future lives.

2 Playford members have attended a regional briefing and each member will input into our debates before voting on these very real Resolution issues. It promises to be an interesting and informative evening - visitors are very welcome to join us: Tuesday 6th February at 7.30 p.m. in Playford Village Hall. Contact playfordwi@gmail.com

ALICE IN WONDERLAND TEA PARTY - 16TH DECEMBER 2023



Alice, the Red Queen, the White Rabbit and the Mad Hatter all arrived at Playford Village Hall the week before Christmas to entertain at the Mad Hatter's Tea Party.

There were plenty of paste or cheese sandwiches, tea pots filled with fruit juice and of course, jam tarts!!! There were even flamingos to play croquet with.

The Mad Hatter was also a fabulous conjurer, carrying out some amazing card tricks.



Yvonne Sarratt, her family and friends organised the party and the Playford Hall Management Committee would like to thank them all for all their time, hard work and attention to detail with the hall and their costumes.



Piano Lessons

*All ages & abilities welcome
from
Beginners to Advanced*

Theory tuition
ABRSM or Trinity College exams

Come and learn about the piano at
your own speed;
free, no obligation half hour taster
session

Kate Parish

BA (Hons), DipMus (Open)

email: kate.parish44@gmail.com

tel: 01473 612997
07935 337694



**Foot Clinic @ The Angela
Cobbold Hall running on
Fridays 6 weekly**

To book an appointment
please call Charlotte on
07712448775

Home Visits are also
available.

Email:
charlottefhp@outlook.com

James Aldous

Heritage Clocks



Restoration,
Repairs & Sales
of Fine Clocks
& Barometers

28 Kingsgate Drive, Ipswich,
Suffolk IP4 4DL

01473 713132

07771681115

heriageclocks@hotmail.co.uk

Collection & Delivery all areas	Clocks & Barometers bought & sold	Fee estimates & advice given
---------------------------------------	---	---------------------------------



Solving issues with computers, tablets,
laptops, smartphones and TVs



Marc Fowler

07812 453965

marc@fowlerweb.net

www.fowlerweb.net

BINKY & CO

Binky had a good Christmas. He always looked forward to his Christmas day lunch and unfortunately that was the best part of it. The looking forward. It usually went downhill after that. However, this time his wonderful wife and cordon bleu chef (not) did not burn the turkey but as Binky was slicing it and blood ran from the knife, he guessed something was not quite right. "Darling, I think this may be a tadge under-done" he said in the quietest, most understanding and loving sort way. "Rubbish you idiot" came the terse reply. "Its just a little rare in places." Binky's heart sank. This was not going to be a battle free zone and he feared worse would come. He was not disappointed. The roast potatoes were fine. The Brussels sprouts were just an over-cooked mess swimming in water. Indigo had forgotten to buy any parsnips, Binky's favourite, and the pigs in blankets were more a rescue from the cat's litter tray.

But it's all there was so Binky got on with it after pouring some congealed brown stuff called gravy over his roast potatoes. Yes, a most unforgettable meal. But Binky cheered up when he remembered he had booked Christmas lunch on Boxing Day at the Salvation Army Hall.

When the next day came, Binky made sure he got dressed in his most worn-out clothes and he didn't shave, in fact he used his special after shave 'Eau de Skunk' special formulated by the famous Parisian perfumier Rennee Catspi. Donning his old torn and battered gardening coat he strode out confidently to the industrial estate and on to the Sally Army Hall knowing there wasn't a chance of being recognised. He went in. "Hello Binky" said the man on the door. "Go in, we are expecting you."

Binky sat down at a table with some homeless tramp-type people. Binky felt quite underdressed. The crackers came out and the joke telling started. Binky sighed, how he hated the cracker jokes, but he joined in so as to save face and not leave himself open to being called grumpy.

Bert sitting opposite was the first. "I have this incredible ability to predict what's inside a wrapped present. It's a gift." He said followed by gales of laughter all round. Binky groaned. Big Sal was next. "Why did Santa have to go to the hospital? Because of his poor elf."

This was all getting too much for Binky, he couldn't wait for his table to be called up to the serving counter. But there was just one more from Bert. "Why are Christmas trees so bad at sewing? Because they're always dropping their needles." But help was at hand. "Table number five please come up." Bellowed a rather rotund gentleman holding a ladle. But Binky was sure of the old saying. Never trust a skinny chef.

Binky was embarrassed but walked confidently forward. He took a plate from the pile on the heater. "Turkey, Binky?" asked the young lady in front of him. "Oh yes please." said Binky. "Vegetables, Binky?" asked the pleasant young man. "Oh yes please." said Binky. "Roast potatoes?" asked a rather gorgeous young lady. "Oh yes please." Answered Binky.

"Gravy Binky?" came a rather terse question as a ladle full of gravy was poured onto his plate so that it overflowed and dowsed his thumbs and hands in hot thin Bisto. "Ohhhh" said Binky in awkward pain. He looked up and there in front of him stood his wonderful wife, Indigo.

RIVERVIEW GARDENING

Garden & Grounds Maintenance

Providing all aspects of garden & grounds maintenance to both domestic and commercial customers.

Ride-on mower available

Green waste removed

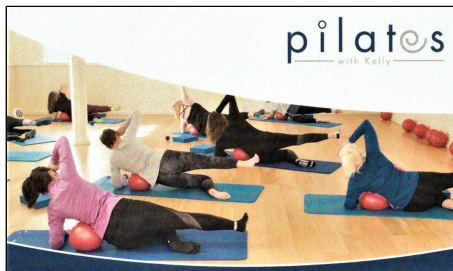
Experienced - Qualified -
Insured

Call Oliver 07779152936

01728 561990

mail:

Riverviewgardening@gmail.com



LIVE CLASSES

Bealings Village Hall

Friday Afternoon 12.45 & 2.00 p.m.

Zoom Classes

Tuesday morning 6.30 a.m. & 9.00 a.m.

Get in touch for more information & alternative venues

www.pilateswithkelly.co.uk

pilateswithkelly@hotmail.co.uk

07919377855

CULPHO

PARISH COUNCIL CLERK

John Ager, 8 Postmill Close, Grundisburgh IP13 6UU

01473 735541

CHURCHWARDEN

Richard Garnham, Cherry Box Cottage, Meeting Lane, Grundisburgh IP13 6TT

01473 738139

CULPHO CHURCH AND COMMUNITY NEWS

Since the start of the new year the weather has thankfully not been as wet with Northerly airstreams bringing colder conditions at times. The flooding which occurred in Farrows Lane has been addressed with the adjacent landowner digging a new trench which hopefully will alleviate the problem.

The ***WINTER WASSAIL*** concert held in the Church just before Christmas was a huge success featuring an array of musical instruments and talented vocalists. Chris Pearce is busy establishing a programme for Culpho Music 2024

Our Rector Katrina Dykes has unfortunately had to relinquish her post of the priest within the Carlford Benefice. Due to ill health within her family, who live in Somerset, along with her husband they have moved down to the South West where Katrina has taken another position. This leaves the Benefice without a rector, options for a replacement are being considered. Services in St Botolph's Culpho remain as of the normal schedule.

Sunday 25th February 3.00 p.m. Sung Evensong

Wednesday 28th February 9.30 a.m. Holy Communion

*Richard Garnham
Churchwarden.*



JM

Carpentry

07754282210

Joshua@jm-carpentry.com

www.jm-carpentry.com



Essex & Suffolk
PEST SOLUTIONS

*Your Local Pest Control Experts
for homes and businesses*

- **Free advice, fast response**
- **Highly accredited (NPTA)**
- **Fully qualified & insured**
- **Discreet –unmarked vehicles**

*All pests covered
from rodents & insects
to moles & birds*

info@eandspestsolutions.co.uk

Tel: 01473 328092



•MOT's•SERVICING•TYRES

01473 735575

MOT Classes 4 & 7
Servicing & Repairs

Diagnostics

Tyres

Aircon

EV Qualified

E. B. Button & Sons Ltd.

Funeral Directors

24 St. Johns Street

Woodbridge

Suffolk IP12 1EB

Tel: 01394 382160

Fax: 01394 386814

Directors:

D. E. Moore Dip.F.D.

J. V. M. Moore

K. J. Eagle

C. S. Moore Dip.F.D.

S. J. Moore

Registered in England No 1193659

NEW TO THE VILLAGE?

Great Bealings: For a Welcome Leaflet please contact
Norman Porter on 735565 or nhp@rillcott.co.uk

Little Bealings:

Please see the parish website for information: www.littlebealings.onesuffolk.net

Playford:

For Information please see the parish website: www.playford.org.uk

GOOD NEIGHBOUR SCHEME - Services for those with Mobility Problems

This local Scheme is now up and running. If you need help with things like:

- lifts especially to doctors' surgeries and hospital appointments
 - getting prescriptions
 - minor domestic repairs, such as checking smoke alarms and changing light bulbs
 - short term help with pets
- phone 01473 345400 and leave a message – someone will call you back.

For those who need regular transport, the Coastal Accessible Transport Service is a charity which provides lifts. Tel 01728 830516 for details.

BEALINGS AND PLAYFORD NEWSGROUP

To be added to the growing number of residents who receive regular emails about local news, events and services send your email address to:

bealingsplayfordnews@googlegmail.com

BUSES

Timetables for the 70 and 70A services serving the local area are available at:

<https://www.suffolkonboard.com>

LOCAL CRIME INFORMATION

The Police Direct scheme sends phone emails with the latest information on local crime, warnings about bogus callers, crime reduction advice and updates from the Safer Neighbourhood Team. Sign up at

<https://www.suffolk.police.uk/contact-us/police-connect-sign>

Report Anti-Social Behaviour call 111 (Police) or 03330162000 (ESC)

NEED TO REPORT A PROBLEM?

Road repairs and Maintenance – potholes, overhanging vegetation, signs, flooding, verge cutting etc – problems should be reported on line at:

<https://highwaysreporting.suffolk.gov.uk/> or by email to:

customer.services@suffolk.gov.uk. or phoning 0345 606 6171 In an emergency contact the police.

Public Rights of Way Footpath **problems** can be reported to Suffolk County Council

www.suffolk.gov.uk

Fly Tipping and Litter: Contact Suffolk Coastal Services on 01394 444000 or email www.eastsuffolk.gov.uk

Please keep this page for future reference, it will only appear if space permits

ACTIVITIES/SERVICES

BEALINGS

VH: Village Hall AS: All Saints ACH: Angela Cobbold Hall

BALLROOM DANCING	VH	Tue	7.30 p.m.	<i>Teresa Jay 07929310480</i>
CARPET BOWLS	VH	Wed	2.00 p.m.	<i>Kathy Price 621419</i>
DANCE CLASS	VH	Wed	9.30 a.m. .	<i>Debbie Watkins-Jones 0711161522</i>
	VH	Fri	9.30 a.m. .	
FYNN VALLEY WALKS	AS	Wed	10.30 a.m.	Walks leave from the church
JOHN BELSTEAD SPORTS COURT				
				Subscribers https://v2.hallmaster.co.uk/Diary/ViewWeeklyDiary/6622
				Non-Subscribers http://bealingsvillagehall.org.uk or Volunteer Administrator:07925 181390
KNIT & NATTER	ACH	Mon	1.30 p.m.4.00 p.m.	<i>Info Contact 01473 623133</i>
LIBRARY	ACH	Thu	2.15 - 2.45(every 4th Thu)	<i>07809594685</i>
PILATES with DIDI	AS	Mon	7.30 p.m.	<i>Helen 07889 907615</i>
PILATES	VH	Tue	9.30 a.m.	<i>Caroline Boggon 07850683196</i>
PILATES	VH	Fri	12.30 p.m.	<i>Kelly Steventon 07919377855</i>
READING ROOM	ACH	Sat	10.30-12.30or by arrangement	<i>Info 01473 620213</i> Books for all ages, jigsaw puzzles, DVDs etc to borrow. Drop off for FIND donations.
SNOOKER	VH	Any day	<4 hours	<i>Margaret Wilson 07769195132</i>
SOCIAL EVENING	ACH	Fri	7.00 p.m.	<i>Info 01473 735153</i> Licensed bar, pub games etc. and other events
VILLAGE HALL BOOKING				<i>Margaret Wilson 07769195132</i> <i>bookings.vh.bealings@btinternet.com</i>
YOGA	VH	Sat	9.30 a.m.	<i>Caroline Boggon 07850683196</i>

PLAYFORD

PH: Parish Hall

ART CLUB	PH	Thu	10.00 a.m.	<i>Mary Spillett 01394 385295</i>
LIBRARY		Thu	1.50 – 2.05 (every 4 weeks)	
			mobile library at phone box	<i>07809594685</i>
MILK		Tue, Thu, Sat		<i>Dairy Crest 747272</i>
NEWSPAPERS				<i>DC Patrick Newsagents 01986 874305</i>
PARISH HALL BOOKING			Book on line:	<i>bookings.playfordvillagehall@gmail.com</i> or contact via voicemail <i>01473 487215</i>
PILATES	PH	Wed	7.30 p.m. - 8.15 p.m.	<i>Julie Gorevan on 07702 883245</i>
TODDLERS	PH	Fri	9.30 a.m.	toddler group <i>playfordtoddlers@gmail.com</i>
WI	PH	Tue	7.30 p.m.(1st in month)	<i>Sue Bruce 738265</i>



MARCH 2024 NEWS

Contributions for the March 2024 News to be submitted by:

5.00 p.m. Tuesday, 20th February

The news will be ready for distribution by **Saturday, 2nd March.**

DISCLAIMER

The views expressed in this magazine are those of the contributors and do not necessarily reflect the views of the Editorial Team.

Editorial Team email address: fynnlarknews@gmail.com

Fynn - Lark News

Enquiries and Submission of Articles [*fynnlarknews@gmail.com*](mailto:fynnlarknews@gmail.com)

Team Co-ordinator & Advertising	Norman Porter	01473 735565
Distribution	Peter Carr	01473 620213
Editorial Team	Jane Hartley	01473 612122
Design & Layout	Tim Llewellyn	01394 450403